

**Bedside imaging. Comprehensive support from nerve blocks to peri-operative monitoring.**



**One probe, whole-body ultrasound solution.**

**An integrated imaging supporting guided blocks, line placement, gastric volume and cardiac assessment.**

**Nerve block guidance for more control over regional procedures.**

Butterfly iQ+ provides in-pocket accessibility for nerve block guidance thanks to high-fidelity B-mode, as well as Needle Viz developed specifically for procedural support<sup>1</sup>.

**Perform guided procedures with ease with Biplane Imaging.**

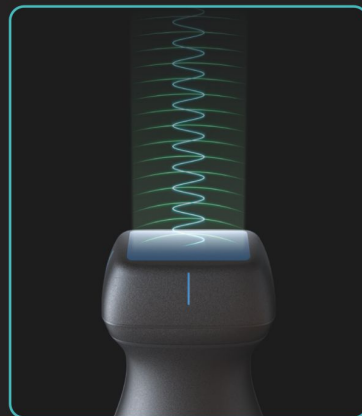
Now with the worlds first POCUS Biplane Imaging, it is possible to see the short and long axis of your needle simultaneously in real-time. Biplane Imaging has been built to support regional nerve blocks, peripheral IV access, pain management injections, and more<sup>2</sup>.

**Rapid TTE.**

A focused bedside transthoracic echocardiogram performed by anesthesiologists has been shown to accurately detect significant cardiovascular pathology and impact perioperative management<sup>3</sup>. Utility includes assessment of global cardiac function, as well as point-of-care shock assessment.

**Pre-operative gastric status.**

Butterfly iQ+, with imaging developed in partnership with anesthesiology, can help the clinician identify gastric contents. Even in fasted patients, residual gastric content has been associated with complications of pulmonary aspiration, leading to up to 9% of anesthesia-related deaths<sup>4</sup>.



1. <https://www.ncbi.nlm.nih.gov/pmc/articles/PMC6465072/>  
2. <https://www.ncbi.nlm.nih.gov/pmc/articles/PMC2766872/>  
3. <https://pubs.asahq.org/anesthesiology/article/132/4/908/108868/Perioperative-Point-of-Care-Ultrasound-From-Concept>  
4. <https://www.ncbi.nlm.nih.gov/pmc/articles/PMC6190418/>

**Distributed locally by**



**Wellesta** is the official distribution partner of **Butterfly Network INDIA**, managing local delivery, fulfilment, and user training of all Butterfly iQ+™ products in india.

To find out more email us on  
[wecare.in@wellesta.com](mailto:wecare.in@wellesta.com)

Visit us online at  
[wellesta.co.in](http://wellesta.co.in)

Disclaimers : For prescription use only. Butterfly iQ+™ is a portable ultrasound system designed for external ultrasound imaging. Read the User Manual for warnings, precautions and/or contraindications. This is a recreation of a hospital, and doesn't create an endorsement by any HCP, hospital or laboratory.

Follow Us



Heart, lung and deep vein scans at the bedside. Support from diagnosis through PIV placement.



## One probe, whole-body ultrasound solution.

An integrated imaging solution for critical assessments and guided procedures that never leaves your side.

### Central venous catheter placement and critical procedural guidance.

Now with the Biplane Imaging technology, IQ+ can support critical care clinicians in central venous access, difficult PIV access, arterial access, thorax/paracentesis, percutaneous tracheostomy, and airway management<sup>1</sup>.

### Focused cardiac assessment.

Does your patient have systolic heart failure? Is there a pericardial effusion? Are they fluid responsive? With 3 dedicated presets for cardiac imaging, Butterfly IQ+ can give you the confidence to make quick bedside decisions in a large range of patient types<sup>2</sup>.

### Lung evaluation.

Lung ultrasound (LUS) can help clinicians rapidly and accurately identify most of the common causes of dyspnea. LUS can also help identify COVID pneumonia and can assist in patient management as well as resource utilization in critical care<sup>3</sup>.

As IQ+ can be placed in a simple sheath<sup>4</sup>, it can help preserve PPE as well as eliminate time-consuming cleaning protocols of larger devices. Butterfly IQ+ can also help limit exposure of additional healthcare practitioners by reducing patient transport.

### Deep vein thrombosis surveillance.

For patients who have high coagulation, are sedentary for long periods in a critical state, or are being screened for clot pre-CVC insertion, Butterfly IQ+ offers dedicated presets optimized for assisting the clinician to identify DVT. Developed to display echogenic thrombus within deep vessel lumen, IQ+ can support the clinician's identification of DVT before it develops into a pulmonary embolism.



1. published online 19/01/2020  
2. www.ncbi.nlm.nih.gov/pmc/articles/PMC7048672/  
3. www.ncbi.nlm.nih.gov/pmc/articles/PMC7048672/  
4. butterflynetwork.com/ind-reducing



Distributed locally by



Wellesta is the official distribution partner of Butterfly Network India, managing local delivery, fulfilment, and user training of all Butterfly IQ+™ products in India.

To find out more email us on  
[wecare.in@wellesta.com](mailto:wecare.in@wellesta.com)

Visit us online at  
[wellesta.co.in](http://wellesta.co.in)

Disclaimers: For prescription use only. Butterfly IQ+™ is a portable ultrasound system designed for external ultrasound imaging. Read the User Manual for warnings, precautions and/or contraindications. This is a recreation of a hospital, and doesn't constitute an endorsement by any ICP, hospital or laboratory.

Follow Us



**Whole-body assessment.  
FAST exams. Procedural guidance.  
Anytime, anywhere.**



## One probe, whole-body ultrasound solution.

**An integrated imaging solution that supports an array of emergency medicine applications and never leaves your side.**

### **Perform guided procedures with ease with Biplane Imaging.**

Now with the world's first POCUS Biplane Imaging, it is possible to see the short and long axis of your needle simultaneously in real-time.

### **Lung evaluation.**

The assessment of patients with acute shortness of breath has always been a cornerstone of Emergency Medicine, and lung ultrasound can help clinicians rapidly and accurately identify many of the common causes of dyspnea.

### **Focused cardiac assessment.**

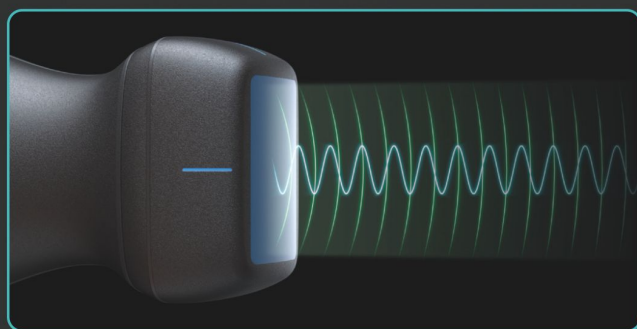
With 3 presets dedicated to cardiac imaging, Butterfly iQ+ can give you the confidence to make quick bedside decisions in a large range of patient types.

### **Peripheral and central line placement.**

Ultrasound guidance has been shown to improve success rates, reduce the number of attempts and decrease the complications associated with CVC insertion<sup>1</sup> as well as peripheral line placements.

### **FAST exams.**

Extended focused Sonography with trauma (EFAST). And it guides the clinician to identify reversible causes of traumatic shock. The EFAST preset was developed in conjunction with emergency room clinicians to balance the frame rate needed to identify pneumothorax, pericardial effusion, and intra-abdominal bleeding only one probe needed for, rapid evaluation of traumatic injury.



1. <https://www.ncbi.nlm.nih.gov/pmc/articles/PMC2766872/>



**Distributed locally by**



**Wellesta** is the official distribution partner of **Butterfly Network INDIA**, managing local delivery, fulfilment, and user training of all Butterfly iQ+™ products in India.

To find out more email us on  
[wecare.in@wellesta.com](mailto:wecare.in@wellesta.com)

Visit us online at  
[wellesta.co.in](http://wellesta.co.in)

Disclaimers : For prescription use only. Butterfly iQ+™ is a portable ultrasound system designed for external ultrasound imaging. Read the User Manual for warnings, precautions and/or contraindications. This is a recreation of a hospital, and doesn't create an endorsement by any HCP, hospital or laboratory.

Follow Us





## Patient assessment transformed!

Butterfly iQ+™, the single-probe, whole body handheld device is now available in India



Butterfly brings the power of ultrasound into your assessment, diagnosis and treatment process.

The Future of ultrasound is here.

### Transform care delivery across:

- Anesthesiology
- Cardiology
- Critical Care
- Pediatric Medicine
- Emergency Medicine
- Reconstructive Surgery

1 Probe  
5 Imaging Modes  
20+ Presets  
Abdomen  
Abdomen Deep  
Aorta & Gallbladder  
Bladder  
Cardiac  
Cardiac Deep

Cardiac Coherence  
FAST  
Lung  
MSK-Soft Tissue  
Musculoskeletal  
Nerve  
OB 1/GYN  
OB 2/3  
Ophthalmic

Pediatric Abdomen  
Pediatric Cardiac  
Pediatric Lung  
Small organ  
Vascular: Access  
Vascular: Carotid  
Vascular: Deep Vein

### Top features:

Built to last the toughest shifts:

- Military-grade tested<sup>1</sup>
- Water and dust resistant

Powerful procedural tools:

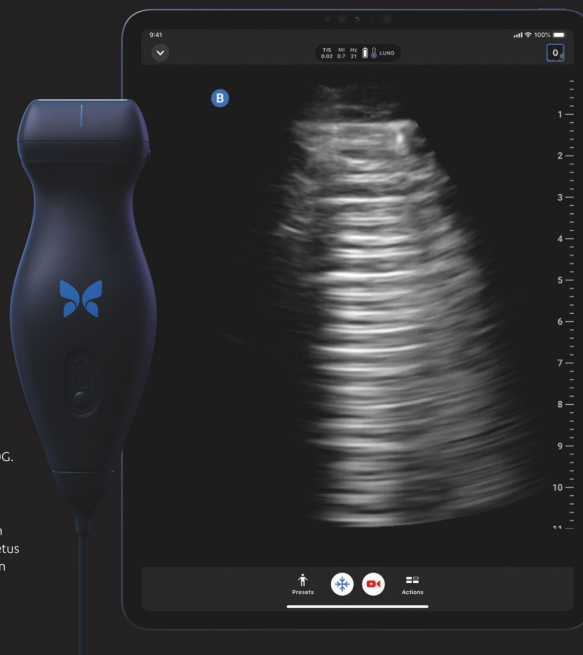
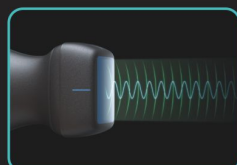
- Biplane Imaging™
- Needle Viz™
- Remote collaboration with Teleguidance™
- Education with in-app video tutorials

Wellesta Holdings Pte. Ltd., Unit  
3A, Level 2, The Centrium, Phoenix  
Market City, LBS Marg, Kurla,  
Mumbai 400070

Disclaimers: IP67 up to the line on the back of the probe. MIL-STD-810G.

Email [wecare.in@wellesta.com](mailto:wecare.in@wellesta.com)  
Telephone +91 9555 442200  
Website [wellesta.co.in](http://wellesta.co.in)

The use of ultrasound must be in compliance with the Pre-Conception and Pre-Natal Diagnostics law and cannot be used to determine the fetus gender. Any images of hospitals, clinics or laboratories are a recreation of a hospital, and do not create an endorsement by any healthcare professional, hospital, or laboratory.



Distributed locally by



Wellesta is the official distribution partner of **Butterfly Network INDIA**, managing local delivery, fulfilment, and user training of all Butterfly iQ+™ products in India.

To find out more email us on  
[wecare.in@wellesta.com](mailto:wecare.in@wellesta.com)

Visit us online at  
[wellesta.co.in](http://wellesta.co.in)

Disclaimers : For prescription use only. Butterfly iQ+™ is a portable ultrasound system designed for external ultrasound imaging. Read the User Manual for warnings, precautions and/or contraindications. This is a recreation of a hospital, and doesn't create an endorsement by any HCP, hospital or laboratory.

Follow Us

